

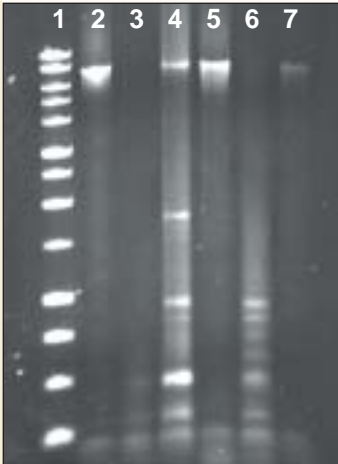
# exACTGene™ PCR Kits

**Superior performance and reliability for routine PCR!**

THE *EXACTGENE* COMPLETE PCR KIT AND CORE REAGENT SETS PROVIDE ALL OF THE REAGENTS YOU NEED TO PERFORM RELIABLE ROUTINE PCR. ROBUST TAQ<sup>+</sup> DNA POLYMERASE, ULTRA PURE NUCLEOTIDES AND OPTIMIZED BUFFERS IN BOTH THE KIT AND SETS PROVIDE SUPERIOR PCR YIELD AND SPECIFICITY. THE COMPLETE KIT ALSO INCLUDES A CONTROL TEMPLATE AND CONTROL PRIMERS FOR TROUBLESHOOTING PCR PARAMETERS.

THE ADVANTAGES OF THE *EXACTGENE* COMPLETE PCR KIT AND CORE REAGENT SETS ARE EASY TO SEE:

**OUTPERFORMS OTHER ROUTINE PCR KITS WHEN AMPLIFYING LARGE TARGET SEQUENCES.**



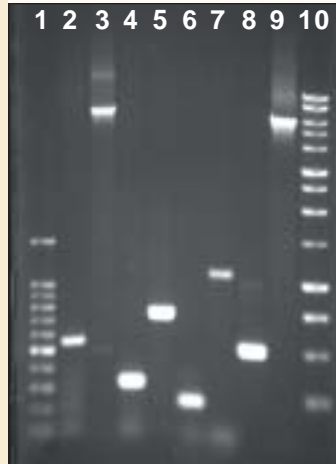
**Figure 1.** Amplification of a 7.5kb target sequence from 0.5ng bacteriophage Lambda DNA in identical 50µL reactions using different commercial PCR Kits. Lane 1, 1kb DNA ladder; Lane 2, exACTGene Complete PCR Kit; Lanes 3-7, Suppliers A, B, C, D, and E.

**PROVIDES CLEAN AND CONSISTENT PCR YIELDS FROM 6KB TO 10KB.**



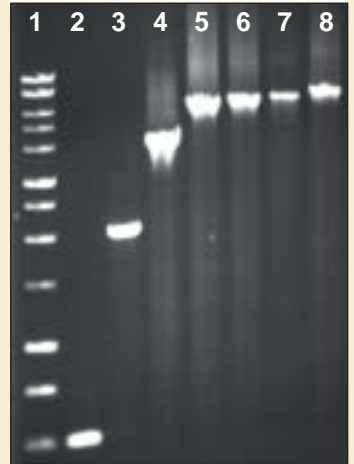
**Figure 2.** Amplification of various sequence lengths from 1.0ng bacteriophage Lambda DNA (nucleotides 7,131 through 17,131) using the exACTGene Complete PCR Kit. Lane 1, 1kb DNA marker; Lane 2, 6kb fragment; Lane 3, 6.5kb fragment; Lane 4, 7kb fragment; Lane 5, 7.5kb fragment; Lane 6, 8kb fragment; Lane 7, 10kb fragment; Lane 8, 1kb DNA marker.

**DELIVERS RELIABLE PCR PRODUCTS USING ALL GENOMIC AND cDNA TEMPLATES.**



**Figure 3.** Various sequence lengths amplified from different genomic DNA samples using the exACTGene Complete PCR Kit. Lane 1, 100 bp DNA Marker; Lane 2, 600 bp fragment, human DNA, BAG gene; Lane 3, 6.5kb fragment, phage Lambda DNA; Lane 4, 308 bp fragment, mouse DNA, CC15 gene; Lane 5, 716 bp fragment, mouse DNA, WNT16 gene; Lane 6, 223 bp fragment, yeast DNA, MYO2 gene; Lane 7, 1.1kb fragment, yeast DNA, LT gene; Lane 8, 500 bp fragment, exACTGene Control Reaction; Lane 9, 6kb fragment, exACTGene Control Reaction; Lane 10, 1kb DNA Marker.

**GENERATES EXCELLENT YIELD AND SPECIFICITY FOR ALL PCR AMPLICONS.**



**Figure 4.** Amplification of various sequence lengths from 1.0ng bacteriophage Lambda DNA (nucleotides 7,131 through 14,631) using the exACTGene Complete PCR Kit. Lane 1, 1kb Ladder; Lane 2, 500 bp fragment; Lane 3, 2kb fragment; Lane 4, 4kb fragment; Lane 5, 6kb fragment; Lane 6, 6.5kb fragment; Lane 7, 7.0kb fragment; Lane 8, 7.5kb fragment.



**Fisher BioReagents**

CHOOSE **EXACTGENE** CORE REAGENT SETS AS AN ECONOMICAL CHOICE FOR HIGH QUALITY ROUTINE PCR.

USE THE **EXACTGENE** COMPLETE PCR KIT FOR THE FULL BENEFITS OF THE **EXACTGENE** SYSTEM:

**POSITIVE CONTROLS:** A SET OF POSITIVE CONTROLS (500 BP AND 6KB) ARE PROVIDED FOR TROUBLESHOOTING PCR PARAMETERS (LANES 8 AND 9, FIGURE 3).

**COLOR-CODING SCHEME:** A UNIQUE COLOR-CODING SCHEME FOR REAGENT TUBES IS DESIGNED FOR EASE-OF-USE.

**DUAL REACTION BUFFERS:** EXTRA FLEXIBILITY IS PROVIDED BY INCLUDING SEPARATE TUBES OF BUFFER A (WITH  $Mg^{2+}$ ), BUFFER B (WITHOUT  $Mg^{2+}$ ), AND  $MgCl_2$  SOLUTION.



DESCRIPTION	SIZE†	CATALOG NO.	LIST PRICE
<b>exACTGene Complete PCR Kit</b> (250U Taq†, Buffer A, Buffer B, $MgCl_2$ , dNTPs, three Control Primers, and DNA Template)	200 rxns	<b>FB6100</b>	\$240.00
<b>exACTGene PCR Core Reagents A</b> (Taq†, Buffer A, and dNTPs)	80 rxns	<b>FB6210</b>	\$65.00
	400 rxns	<b>FB6225</b>	\$270.00
<b>exACTGene PCR Core Reagents B</b> (Taq†, Buffer B, $MgCl_2$ , and dNTPs)	80 rxns	<b>FB6245</b>	\$65.00
	400 rxns	<b>FB6260</b>	\$280.00
<b>exACTGene Complete Kit Components</b>			
Taq† Polymerase 250U (5U/ $\mu$ L)	250U	<b>FB6111</b>	\$159.00
10X Buffer A (10mM)	1mL	<b>BP6112</b>	\$10.00
10X Buffer B (10mM)	1mL	<b>BP6113</b>	\$10.00
$MgCl_2$ (25mM)	1mL	<b>BP6114</b>	\$10.00
PCR Nucleotide Mix (10mM)	200 $\mu$ L	<b>BP25652K</b>	\$55.00
Control DNA Template (1ng/ $\mu$ L)	100 $\mu$ L	<b>BP6115</b>	\$10.00
Control Primer 1 (20 $\mu$ m)	100 $\mu$ L	<b>BP6116</b>	\$10.00
Control Primer 2 (20 $\mu$ m)	100 $\mu$ L	<b>BP6117</b>	\$10.00
Control Primer 3 (20 $\mu$ m)	100 $\mu$ L	<b>BP6118</b>	\$10.00

†Purchase of this product is accompanied by a limited license to use it in the Polymerase Chain Reaction (PCR) process for research in conjunction with a thermal cycler whose use in the automated performance of the PCR process is covered by the up-front license fee, either by payment to Applied Biosystems or as purchased, i.e., an authorized thermal cycler.  
‡One reaction is defined as 50 $\mu$ L PCR reaction using 1.25U Taq.

The Polymerase Chain Reaction (PCR) process is covered by U.S. Patents 4,683,202; 4,683,195; and 4,965,188 or their foreign counterparts owned by Roche Molecular Systems, Inc. and F. Hoffmann-La Roche Ltd.



For customer service, call 1-800-766-7000.  
To fax an order, use 1-800-926-1166.  
To order online: [www.fishersci.com](http://www.fishersci.com)